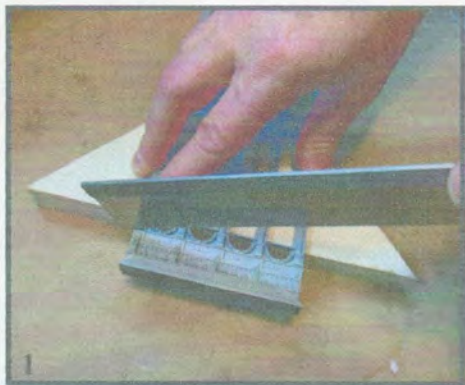


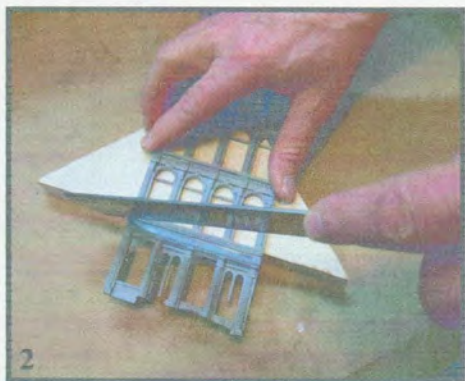
THE ART OF KIT-BASHING BUILDINGS

A QUICK LOOK AT THE BASICS OF HOW TO KIT-BASH PLASTIC BUILDING KITS TO MAKE YOUR TRAIN LAYOUT DIFFERANT AND MORE APPEALING TO VIEW AND AT THE SAME TIME ADD MORE FUN FOR YOU IN ITS CONSTRUCTION.

By Brian Hutchinson



The first piece cut and sand the top portion of your building. This will be the bottom of you building. Glue to the top of the second piece.



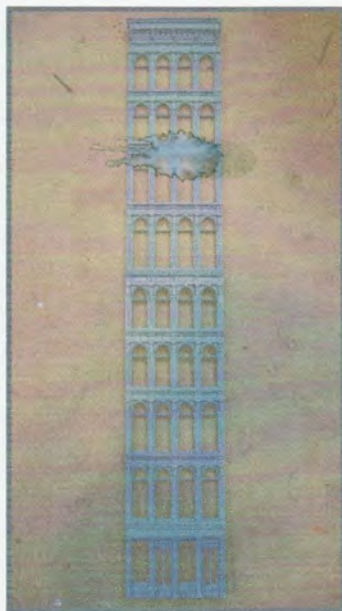
Cut and sand the bottom of the second section of your building. This will be the top of you building. Glue to the top of the bottom section, your first piece.



Sometimes it is easier to scribe a line on the back side of section till you cut all the way through or scribe it deep enough that you can snap off the piece.

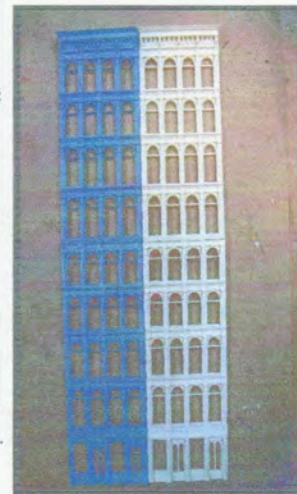
I decided to build a large city building to help fill in some empty space on my layout. My city has some very tall buildings which makes it hard to find any available commerical kits that would be able to fill in the spots that I need. So I plan to kit-bash two City Classic kits together to give me the height I need for the correct look. I chose two City Classic Grant Street Iron Front buildings.

I decided to make my building two sectiond high, which would be equal to a eight-story building. I first start by cutting the top off one of the building front sections. (photo #1) This would be the ground floor with its door and street level windows. After cutting the top off I smoothed the top of the sawed off section using a file and a fine grade sandpaper. I then cut the bottom of the other building fronts off just below the bottom edge of the second floor windows. (photo #2) This will now become the top part of the building front. As with the first section I sand and smooth the surface and prepare to glue the sections together. I repeated the same steps one and two to make more sections. with each section completed I then can

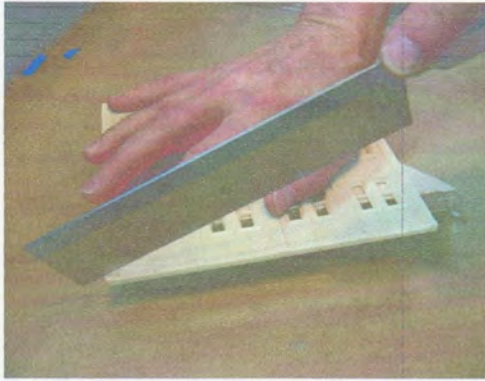


glue the sections together to make the front and sides of my building. The solid brick back wall iand side wall if desired is done the same way.(photo #3)

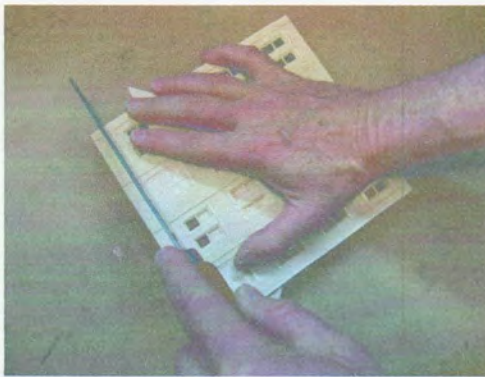
Once you glue the top and bottom sections together, you can now glue the sections together to make the building walls as long as needed. Then you can paint you building. See page on painting buildings.



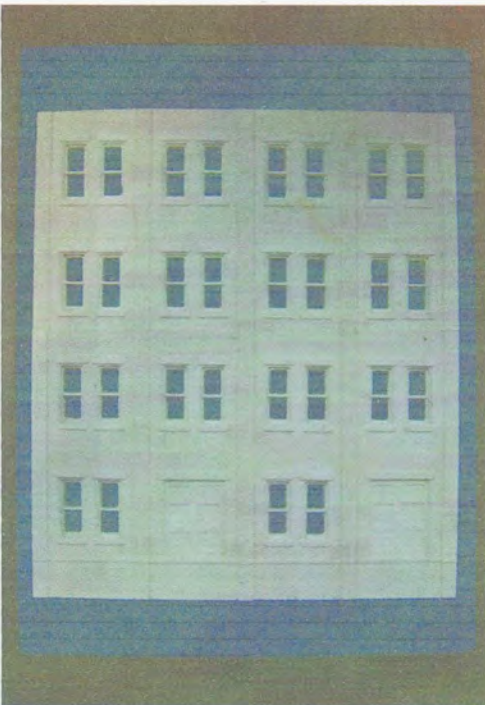
MULTI STORY FACTORY BUILDINGS



Cut top of section, and glue to bottom section.

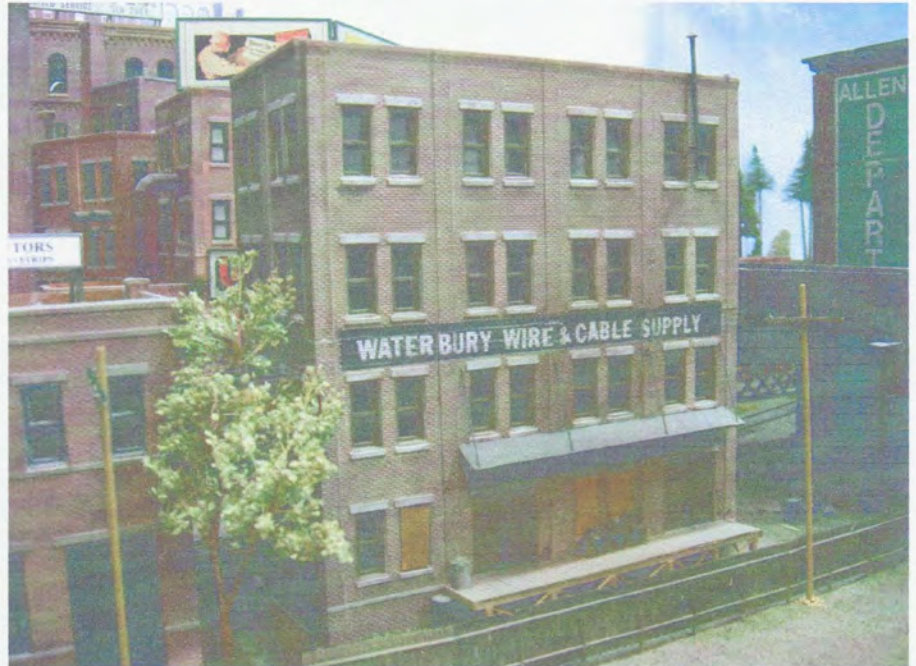


Cut bottom section, and glue to top section.

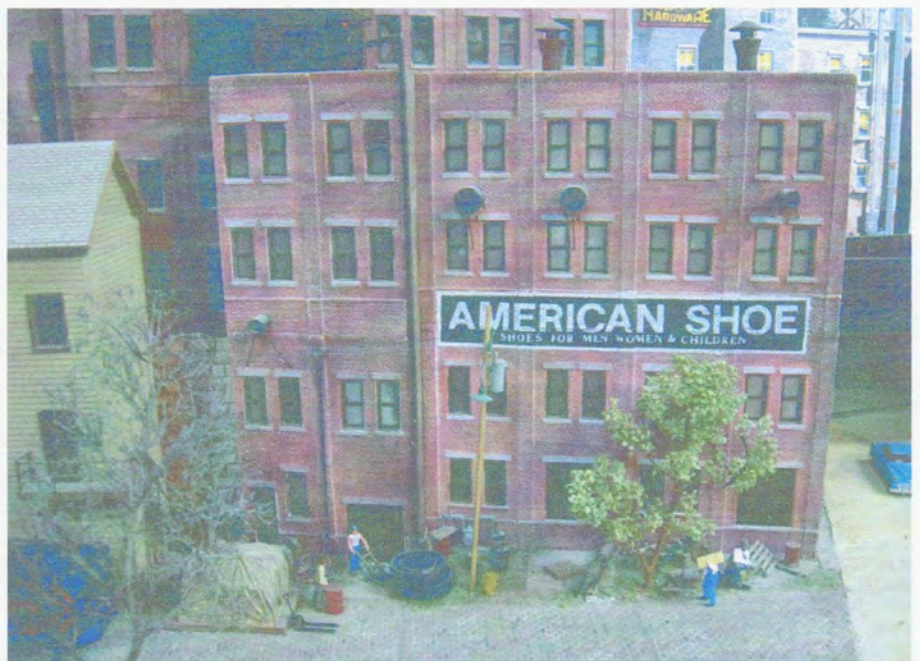


Glue both sections together and now you have main side wall. Repeat the same procedure for the sides. You can make as many wall sections as you need.

When building factory building I go about the procedure the same way as when I built the city hotel. Cut the top and bottom off two sections (if needed) and the glue them together. Then you can arrange the sections to build a factory to whatever shape and size you desire.



Above is a more basic kit-bash design. Using two DMP Laube's Linen Mill kits and stacking them. Below are two Laube's Linen kits which have the sides moved to the front. By just a few small changes you can create a whole new look to your kit-bash building.



PAINTING YOUR BUILDING

When you kit-bashing, you often have several kits that may be made using different color plastics. This presents another challenge to make the finished building look correct. Here's what we need to do.



Several different color plastic sections need to look all the same when the building is assembled.

First spray all the parts with a base coat of white or gray spray paint. Not too thick, just a light coat is fine.



Now, spray all the sides with a light coat of primer red. Make sure the entire building is covered well.



To give the brick the appearance of aging, spray a light coat of flat black paint. Just highlighting some spots on the wall. If you want more aging effect, hit the area again with a light spray.



To dull down the black and to give some highlight to the brick, spray using flat white. Just a light spray to highlight.



If you're satisfied with the colors you can go back and lightly spray any of the colors again.



You now can brush paint all the trim work. Cornices, windows doors, etc. When done. Give the entire building a black ink and alcohol wash.

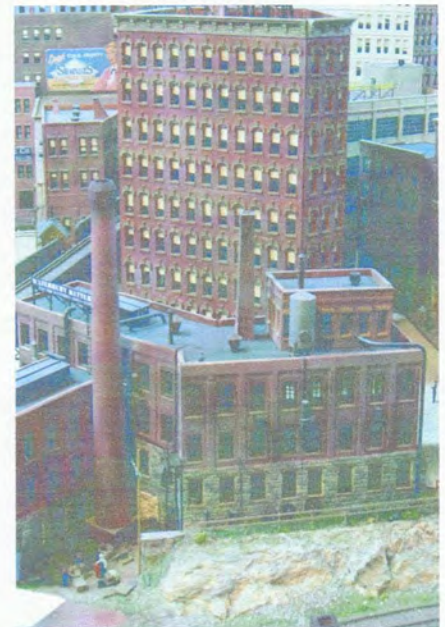


PAINTS: White, Gray, Black, Primer Red and Black Ink wash.

COMMERICAL KITS

THESE ARE SOME COMMERICAL KITS THAT YOU CAN USE FOR
KIT-BASHING

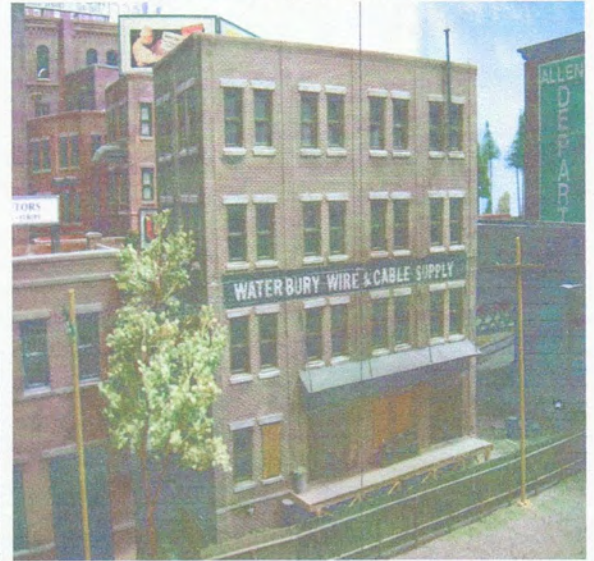
- 1) MAGNUSON - VICTORIA FALLS HOTEL
- 2) MODEL POWER - EMBASSY BUILDING
- 3) RAILWAY DESIGN - EASTON MILL
- 4) SOUTHRIVER MODEL WORKS
- 5) CITY CLASSIC - GRANT STREET



TOOLS & MATTERIALS



Some basic tools for kit-bashing buildings. A good Razor Saw, Modeling Knife with a # 11 and # 16 blades. A large file some sand paper and some plastic strips for suport and Glue. When cutting building from the front side a razor saw may be the best way. When cutting from the back side of the building which has a flat surface you can cut fast using a ruler and a number #16 blade.



TOOLS & MATTERIALS

- 1) Razor Saw
- 2) Model Knife
- 3) Large File
- 4) Square
- 5) T-Square
- 6) Pencil or Marker
- 7) Stips of plastic
- 8) Glue
- 9) Razor Blade
- 10) ruler
- 11) Black Ink Wash

Materials provided, courtesy



www.cityclassics.biz

NOTES
